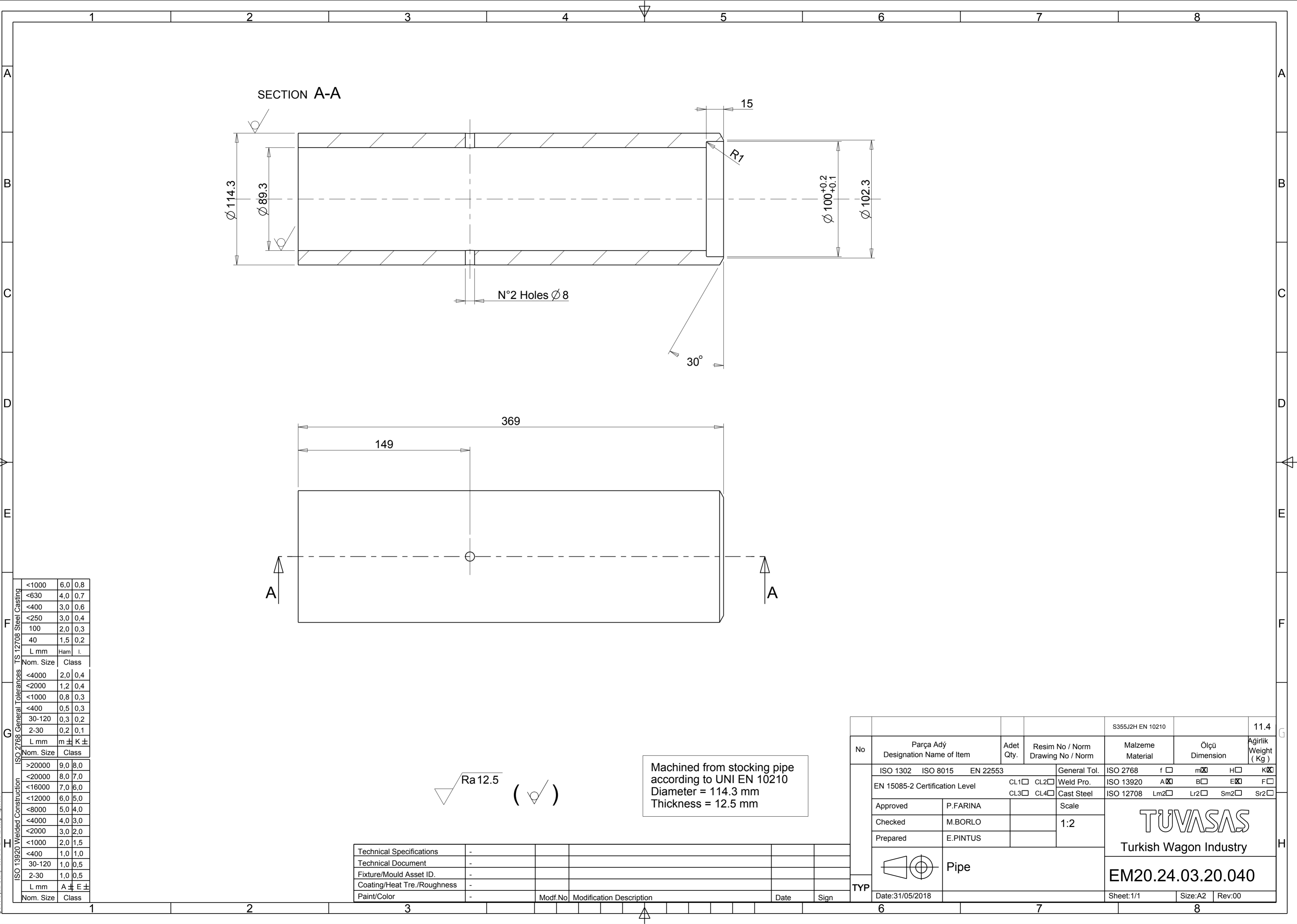


Reproduction, dissemination or use of this document or its all contents in any form without the prior written permission of TÜVASAŞ, is prohibited. Offenders will be liable for the payment of damages. All rights reserved in the event of the grant of a patent, utility model or commercial design registration.



ISO 13920 Welded Construction	<1000	6.0	0.8
	<630	4.0	0.7
	<400	3.0	0.6
	<250	3.0	0.4
	100	2.0	0.3
ISO 2768 General Tolerances	40	1.5	0.2
	L mm	Ham	I.
	Nom. Size	Class	
	<4000	2.0	0.4
	<2000	1.2	0.4
TS 12708 Steel Casting	<1000	0.8	0.3
	<400	0.5	0.3
	30-120	0.3	0.2
	2-30	0.2	0.1
	L mm	m ±	K ±
ISO 13920 Welded Construction	>20000	9.0	8.0
	<20000	8.0	7.0
	<16000	7.0	6.0
	<12000	6.0	5.0
	<8000	5.0	4.0
ISO 2768 General Tolerances	<4000	4.0	3.0
	<2000	3.0	2.0
	<1000	2.0	1.5
	<400	1.0	1.0
	30-120	1.0	0.5
ISO 13920 Welded Construction	2-30	1.0	0.5
	L mm	A ±	E ±
	Nom. Size	Class	

No	Parça Ady Designation Name of Item	Adet Qty.	Resim No / Norm Drawing No / Norm	S355J2H EN 10210	11.4
TYP	ISO 1302	ISO 8015	EN 22553	General Tol.	ISO 2768
	EN 15085-2 Certification Level	CL1 <input type="checkbox"/> CL2 <input type="checkbox"/>	Weld Pro.	ISO 13920	A <input checked="" type="checkbox"/> B <input type="checkbox"/> E <input checked="" type="checkbox"/> F <input type="checkbox"/>
	Approved	P.FARINA	Scale	ISO 12708	Lm2 <input type="checkbox"/> Lr2 <input type="checkbox"/> Sm2 <input type="checkbox"/> Sr2 <input type="checkbox"/>
	Checked	M.BORLO	1:2	TÜVASAŞ Turkish Wagon Industry EM20.24.03.20.040	
	Prepared	E.PINTUS			
Date:31/05/2018		Sheet:1/1		Size:A2	Rev:00